

4

3

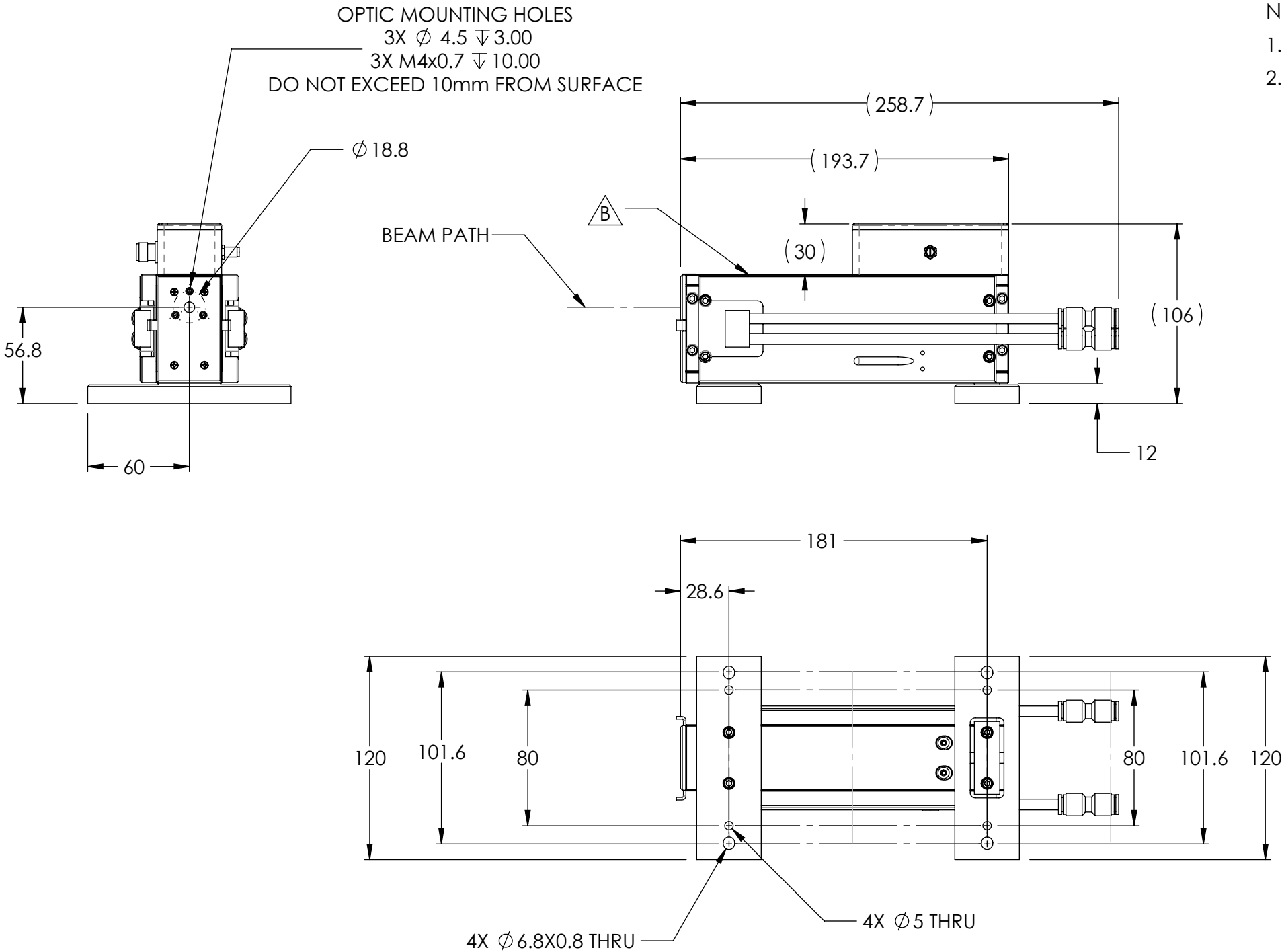
2

1

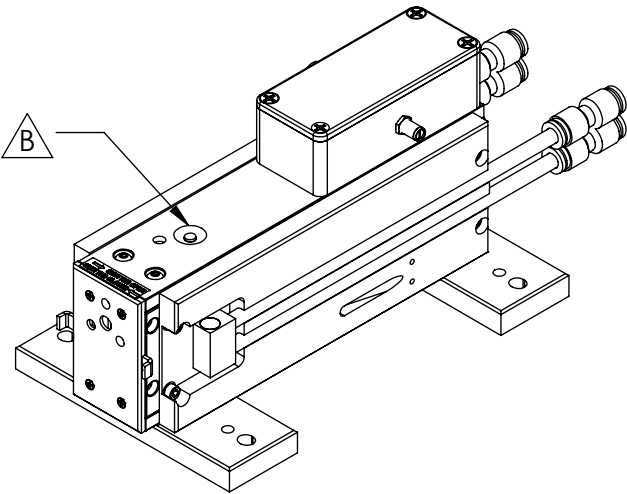
REVISION HISTORY					
ECO	ZONE	REV	DESCRIPTION	DATE	APPROVED
		B	NEW TOP COVER AND LED LIGHT		

- NOTES UNLESS OTHERWISE SPECIFIED:
- BREAK ALL SHARP EDGES AND CORNERS. NO BURRS ALLOWED.
 - NO VISIBLE DENTS, SCRATCHES AND NON-UNIFORMITY.

B



B



A

A




ACCESS LASER
Member of the TRUMPF Group

Phone: 425-582-8674
Fax: 425-582-8679
www.accesslaser.com/
purchasing@accesslaser.com

PROPRIETARY AND CONFIDENTIAL

THE INFORMATION CONTAINED IN THIS DRAWING IS THE SOLE PROPERTY OF ACCESS LASER COMPANY. ANY REPRODUCTION IN PART OR AS A WHOLE WITHOUT THE WRITTEN PERMISSION OF ACCESS LASER COMPANY IS PROHIBITED.

TOLERANCE / UNIT		DRAWN BY	AD	THIRD ANGLE PROJECTION	PART NO.	REV			
ISO 2768	ASME Y14.5-2009					B			
METRIC	INCHES	CHECKED BY			891-02301-006				
0.5 UP TO 6 : ±0.1 < 6 UP TO 30 : ±0.2 < 30 UP TO 120 : ±0.3 <120 UP TO 400 : ±0.5 < 400 UP TO 1000 : ±0.8	.x ± .1 .xx ± .01 .xxx ± .005	APPROVED BY				DESCRIPTION:			
	FRACTIONAL ±1/64 BEND: ±.3 ANGULAR: MACH ± 0°20'	FINISH		L3SL LASER, WC 12V					
ANGULAR: MACH ±0°20'		MATERIAL		DRAWING SHALL BE IN ACCORDANCE WITH ASME Y14.5-2009		DO NOT SCALE DRAWING	SCALE 1:3	SHEET 1 OF 1	SIZE B

4

3

2

1