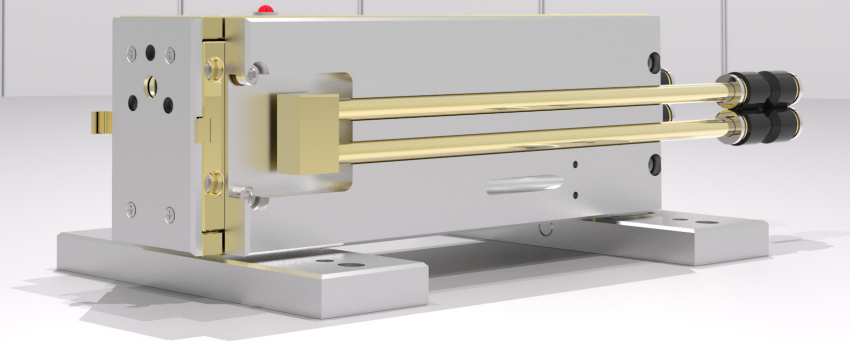


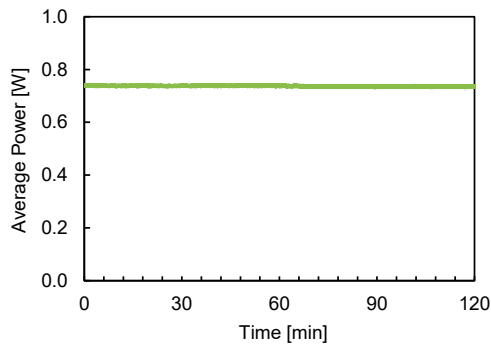
L3SL WCCL Class IIIB



Laser Power

Wavelength	~ 10.6 μm
CW Power	0.4 W
Power Stability	$\pm 2\%$
Duty Cycle	0 - 100 %
Pulse Repetition Frequency	0 - 100 kHz
Rise and Fall Time	250 μs
Peak Power	0.4 W

Typical performance:



Dimensions & Weight

Laser Weight	2.5 lbs
Dimensions L x W x H	7.5 x 2.5 x 2 in
RF Driver Weight	0.5 lbs

Beam Characteristics

Beam Waist Diameter	2.4 mm
Waist Location	Output Coupler
Mode Quality	$M^2 \leq 1.1$
Full Divergence Angle	5.5 mrad
Polarization	$\geq 50:1$ Linear Vertical

Heat & Cooling

Heat Dissipation	≤ 50 W
Cooling Requirement	Water Cooled Closed Loop
Working Temperature	5 - 40 $^{\circ}\text{C}$ (non-condensing)
Min Flow Rate	1 LPM (0.26 GPM)
Recommended Flow Rate	2 LPM (0.53 GPM)
Max Pressure	2.7 bar (40 psi)
Required Chiller Stability	± 0.1 $^{\circ}\text{C}$
Storage Temp. Range	5 - 50 $^{\circ}\text{C}$ (non-condensing)

DC Power Requirements

Laser RF Driver (U I)	12 V 4 A
-------------------------	------------

Notes

Power Stability calculated by: $\pm \frac{P_{max} - P_{min}}{P_{max} + P_{min}}$

Beam specifications measured at: $\frac{1}{e^2}$

Average or pulsed power may exceed listed value. All specifications are measured at the strongest line and are subject to change without notice. Stability measured after 45 minute warm-up to allow laser head to reach thermal equilibrium.



ACCESS LASER
Member of the TRUMPF Group

